

DOCUMENT 00 90 00
ADDENDUM

ADDENDUM: 1

DATE: DECEMBER 30, 2025

PROJECT: HOUSING AUTHORITY OF THE CITY OF LA CROSSE
2025 CAPITAL IMPROVEMENT PROJECTS
1307 BADGER STREET
LA CROSSE, WISCONSIN 54601
PROJECT NO. 25046

FROM: HSR Associates, Inc
100 Milwaukee Street
La Crosse, WI 54603
(608) 784-1830

TO: Prospective Bidders

This addendum forms a part of the Contract Documents and modifies the original Bidding Documents dated DECEMBER 2025. Acknowledge receipt of this Addendum in the space provided on the bid form. Failure to do so may subject the Bidder to disqualification.

This Addendum consists of: 1 PAGE, 0 DOCUMENTS, 1 SECTION, and 2 DRAWINGS.

CHANGES TO SPECIFICATIONS:

1. Section 13 34 19 Pre-Fabricated Steel Pavilion Kit
 - a. See the new section included in this addendum.

CHANGES TO DRAWINGS

2. Sheet G000 COVER SHEET 30"x42"
 - a. See the revised sheet included in this addendum. Disregard the previous version.
 - b. Removed sheet A600 from the drawing set. See the corresponding Civil drawings.
3. Sheet A510 DEMO AND REMODEL PLANS 30"x42"
 - a. See the revised sheet included in this addendum. Disregard the previous version.
 - b. Revised sheet to add prefabricated shelter. See clouded changes.

END OF DOCUMENT 00 90 00

Page Intentionally Left Blank

SECTION 13 34 19

PRE-FABRICATED STEEL PAVILION KIT

PART 1 – GENERAL

1.01 SUMMARY

A. Section Includes:

1. 12' × 12' ALL-STEEL GABLE PAVILION
La Crosse Housing Authority – Stokke Tower Site, La Crosse, Wisconsin.
2. Furnishing and installation of a pre-fabricated, all-steel gable pavilion kit from Fifthroom.com, sized nominally 12 feet by 12 feet. fifthroom.com
3. Structural steel framing, powder-coated steel columns, gable roof structure with 24 gauge metal roofing, fasteners, and related accessories.

B. Related Sections:

1. Division 26 – Coordinate configuration to allow for lighting to be installed by the Div. 26 contractor.

1.02 REFERENCES

A. Building Codes and Standards

1. Wisconsin Uniform Dwelling Code and commercial building requirements as applicable (SPS 321). Snow and wind load design per ASCE 7 or equivalent accepted engineering practice. [Justia+1](https://www.justia.com/codes/wisconsin/)
2. International Building Code (IBC) adopted by local jurisdiction for structural design loads.
3. ASCE/SEI 7 – Minimum Design Loads for Buildings and Other Structures (latest edition accepted by local AHJ).

B. Material Standards

1. ASTM A36/A36M – Standard Specification for Carbon Structural Steel.
2. ASTM A653/A653M – Steel Sheet, Zinc-Coated (Galvanized).
3. ASTM D3359 – Test for Adhesion by Tape Test (coil coating adhesion).

1.03 SUBMITTALS

- A. Product Data: Manufacturer's product literature, including materials, finishes, and component specifications. fifthroom.com
- B. Shop Drawings: Certified drawings showing pavilion plan, elevations, structural framing, connections, column base plate layouts, anchor bolt requirements, roof panel profile, and trim details.
- C. Structural Calculations: Signed, sealed structural calculations specific to the Stokke Tower site conditions demonstrating compliance with site loads (snow, wind).
- D. Samples: Powder coat finish chips, roofing color sample, and fastener finish samples.

1.04 QUALITY ASSURANCE

- A. Manufacturer shall be experienced in modular outdoor steel structures with documented projects of similar scale. fifthroom.com
- B. Installer shall be trained/authorized by manufacturer and experienced in pavilion kit assembly.

1.05 DELIVERY, STORAGE, AND HANDLING

- A. Deliver components in manufacturer's original packaging labeled by part number and location.
- B. Store materials off the ground, dry, and protected to prevent corrosion or damage.
- C. Protect finish surfaces during handling, storage, and installation.

1.06 WARRANTY

- A. Structural Steel Components: Minimum 10-year limited warranty.
- B. Powder Coat Finish: Minimum 10-year warranty against peeling, cracking, or excessive fading.
- C. Metal Roofing Material: Minimum 20-year finish warranty.

PART 2 – PRODUCTS

2.01 MANUFACTURER

- A. Basis of Design: Fifthroom.com Pavilion Kit or equivalent pre-fabricated steel pavilion system. fifthroom.com

2.02 PAVILION SYSTEM

- A. Basis of Design:

1. Fifthroom.com pre-fabricated steel pavilion kit.
2. Pavilion Style: Savannah style as defined by Fifthroom standard product offerings.
3. Overall Dimensions: 12 feet by 12 feet nominal.
4. Roof Configuration: Symmetrical gable roof.

- B. Exclusions:

1. Pavilion kit shall be provided without cupola.
2. Pavilion kit shall be provided without electrical cutouts, raceways, junction boxes, or provisions for future electrical service.

2.03 STRUCTURAL STEEL FRAMING

- A. Columns:

1. Material: Structural steel, ASTM A36 or equivalent.
2. Section: Manufacturer's standard structural section suitable for required design loads.

3. Finish: Factory-applied powder coat.
4. Color: Building Brown.
5. Base Plates: Welded steel base plates with pre-drilled anchor bolt holes.

B. Beams and Rafters:

1. Material: Structural steel, ASTM A36 or equivalent.
2. Finish: Factory-applied coating compatible with exterior exposure.
3. Color (Exposed Steel): Building Brown, to match columns.

C. Connections:

1. Bolted connections using corrosion-resistant fasteners; tighten per manufacturer torque specifications.

2.04 COATINGS AND FINISHES

A. Powder Coating:

1. Exterior-grade thermoset polyester powder coating.
2. Minimum dry film thickness: 2.5 mils.
3. Color: Building Brown for all exposed steel framing, columns, beams, and rafters.
4. Performance: UV-resistant, corrosion-resistant, suitable for Midwest exterior climate.

B. Touch-Up Materials:

1. Manufacturer-approved touch-up paint matching Building Brown.

2.05 ROOF SYSTEM

A. Metal Roofing Panels:

1. Material: Galvanized or Galvalume steel.
2. Thickness: 24 gauge minimum.
3. Profile: Manufacturer's standard gable pavilion roof panel profile consistent with Savannah style.
4. Finish: Factory-applied baked-on enamel.
5. Color: Dark Bronze.

B. Roof Accessories:

1. Ridge cap, eave trim, and rake trim factory-formed to match roof panel profile.
2. Color: Dark Bronze, matching roof panels.

C. Fasteners:

1. Corrosion-resistant fasteners compatible with metal roofing system.
2. Exposed fasteners, where used, shall be color-matched to Dark Bronze.

2.06 DESIGN LOAD CRITERIA (SITE-SPECIFIC – LA CROSSE, WI)

A. Snow Load:

1. Design roof snow load (ASCE 7 ground snow load) not less than 40 psf, typical for La Crosse area, adjusted for exposure and roof slope in structural calculations. selecttrusses.com

B. Wind Load:

1. Basic design wind speed per IBC/ASCE 7 for La Crosse, Wisconsin location (expected in the range appropriate for inland Midwest—consult structural engineer to determine site-specific V value). Design shall account for both horizontal and uplift pressures. [Wind Load Solutions](#)

C. Load Combinations: Structure and connections designed for applicable combinations of dead, live, snow, and wind loads per local code and ASCE 7.

PART 3 – EXECUTION

3.01 EXAMINATION

- A. Verify foundation, anchor bolt locations, and site elevations are correct and ready to support pavilion system.
- B. Confirm site conditions including drainage, grade, and utilities prior to erection.

3.02 INSTALLATION

- A. Pavilion shall be erected strictly in accordance with Fifthroom Savannah-style pavilion details.
- B. Do not modify framing, roof panels, or finishes to accommodate electrical systems or accessories not included in the approved submittals.

3.03 FIELD QUALITY CONTROL

- A. Inspect pavilion components for proper fit, alignment, finish condition, and secure attachment.
- B. Correct or replace defective items in accordance with manufacturer instructions.

3.04 CLEANING AND PROTECTION

- A. Remove packaging and installation debris from site.
- B. Clean exposed metal surfaces; protect pavilion until final acceptance.

END OF SECTION

HOUSING AUTHORITY OF THE CITY OF LA CROSSE

2025 CAPITAL IMPROVEMENT PROJECTS

1307 BADGER STREET

LA CROSSE, WISCONSIN

25046

DECEMBER 2025

BID DRAWINGS

INDEX OF DRAWINGS

PROJECT TEAM

PROJECT MANAGER:	HSR ASSOCIATES, INC. DOUG RAMSEY dramsey@hsrassociates.com 608.784.1830
JOB CAPTAIN:	HSR ASSOCIATES, INC. MIKE LORENS mlorens@hsrassociates.com 608.784.1830
INTERIOR DESIGN:	HSR ASSOCIATES, INC. BRANDY ERNST bernst@hsrassociates.com 608.784.1830
SPECIFICATIONS:	HSR ASSOCIATES, INC. TOBIN FAUCHEUX tfauchaux@hsrassociates.com 608.784.1830
PLUMBING:	HSR ASSOCIATES, INC. RYAN JOHNSON rjohnson@hsrassociates.com 608.784.1830
MECHANICAL:	HSR ASSOCIATES, INC. JAKE BERAN jberan@hsrassociates.com 608.784.1830
ELECTRICAL:	HSR ASSOCIATES, INC. CHRIS CRANDALL ccrandall@hsrassociates.com 608.784.1830
CONSTRUCTION ADMINISTRATION:	HSR ASSOCIATES, INC. RYAN BURKE rburke@hsrassociates.com 608.784.1830

GENERAL

G000 COVER SHEET

CIVIL- STOKKE

C010 TOPOGRAPHIC SITE MAP
C050 DEMOLITION PLAN
C100 SITE PLAN
C200 GRADING PLAN
C300 EROSION CONTROL PLAN
C400 UTILITY PLAN
C500 DETAILS
C501 DETAILS

CIVIL- MULLEN

C010 TOPOGRAPHIC SITE MAP
C050 DEMOLITION PLAN
C100 SITE PLAN
C200 GRADING PLAN
C300 EROSION CONTROL PLAN
C400 DETAILS

ARCHITECTURAL - BECKER

A110 REMODEL PLANS- BUILDING ELEVATIONS-
DETAILS

ARCHITECTURAL - SAUBER

A210 REMODEL PLAN- BUILDING ELEVATIONS-
DETAILS

ARCHITECTURAL - SOLBERG

A310 FLOOR PLANS- SHED ELEVATIONS- SECTION
A320 BUILDING ELEVATIONS
A321 BUILDING ELEVATIONS- DETAIL

ARCHITECTURAL - STOFFEL

A400 DEMO PLANS
A410 REMODEL PLANS
A420 BUILDING ELEVATION- ENLARGED FLOOR PLAN-
DETAILS- CASWORK ELEVATIONS

INTERIOR DESIGN - STOFFEL

ID410 FINISH FLOOR PLAN

ARCHITECTURAL - STOKKE

A510 DEMO AND REMODEL PLANS
A520 BUILDING ELEVATION- SHED ELEVATIONS-
CASWORK ELEVATIONS- DOOR SCHEDULE

INTERIOR DESIGN - STOKKE

ID510 FINISH FLOOR PLAN
ID560 MASTER COLOR SCHEDULE

ARCHITECTURAL - MULLEN

REMOVED SHEET

PLUMBING

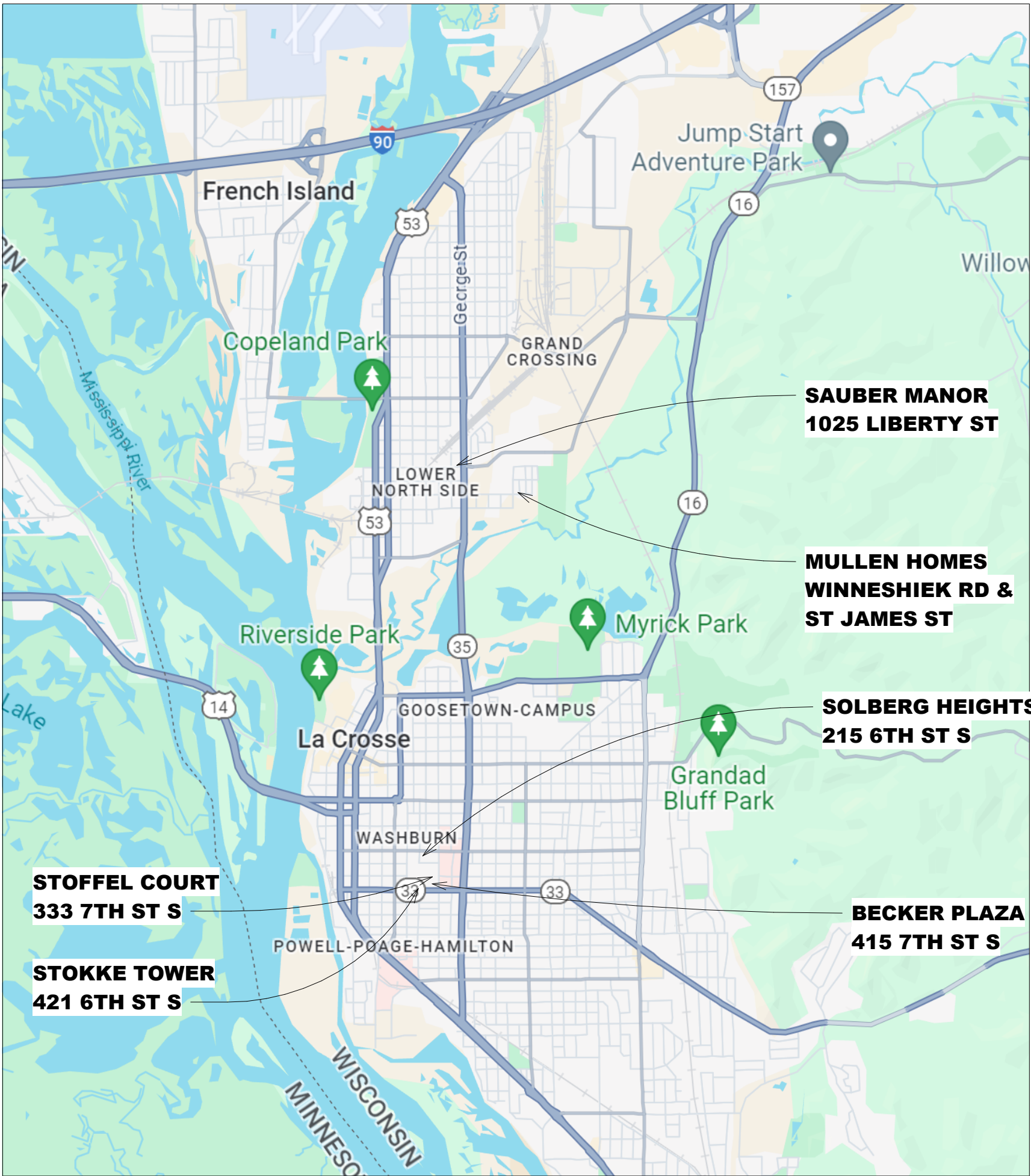
P400 DEMO PLANS- STOFFEL COURT
P401 REMODEL PLANS- STOFFEL COURT
P500 DEMO AND REMODEL PLANS- STOKKE TOWER

MECHANICAL

M001 HVAC GENERAL INFO SHEET
M300 SOLBERG HEIGHTS SHED REMOVAL AND
REMODEL PLAN
M400 STOFFEL COURT REMOVAL PLAN
M410 STOFFEL COURT REMODEL PLAN
M500 STOKKE TOWER SHED REMOVAL AND
REMODEL PLAN
M600 HVAC DETAILS

ELECTRICAL

E001 ELECTRICAL SYMBOLS
E310 POWER, LIGHTING, AND DEMO PLAN- SOLBERG
ED400 ELECTRICAL DEMOLITION PLAN- STOFFEL
COURT
E410 POWER PLAN- STOFFEL COURT
E420 LIGHTING PLAN- STOFFEL COURT
E460 RISER DIAGRAM AND SCHEDULES- STOFFEL
COURT
ED500 DEMLITION PLAN- STOKKE TOWER
E501 SITE PLAN- STOKKE TOWER
E510 FIRST FLOOR POWER PLAN- STOKKE TOWER
E520 FIRST FLOOR LIGHTING PLAN- STOKKE TOWER
ED601 SITE DEMOLITION PLAN- MULLEN
E601 SITE LIGHTING PLAN- MULLEN



CITY MAP
SITE LOCATION MAP

ARCHITECTURE
ENGINEERING
INTERIOR DESIGN



HSR ASSOCIATES INC.
100 MILWAUKEE STREET
LA CROSSE, WISCONSIN
PHONE: 608.784.1830
FAX: 608.782.5844
www.hsrassociates.com

Consultant:

HOUSING AUTHORITY OF THE CITY OF LA CROSSE
2025 CAPITAL IMPROVEMENT PROJECTS

Project Title:
Project Location: 1307 BADGER STREET
LA CROSSE, WI 54602
Sheet Title:

HSR Project Number:
25046
Project Date:
DECEMBER 2025
Drawn By:
MPL
Key Plan:

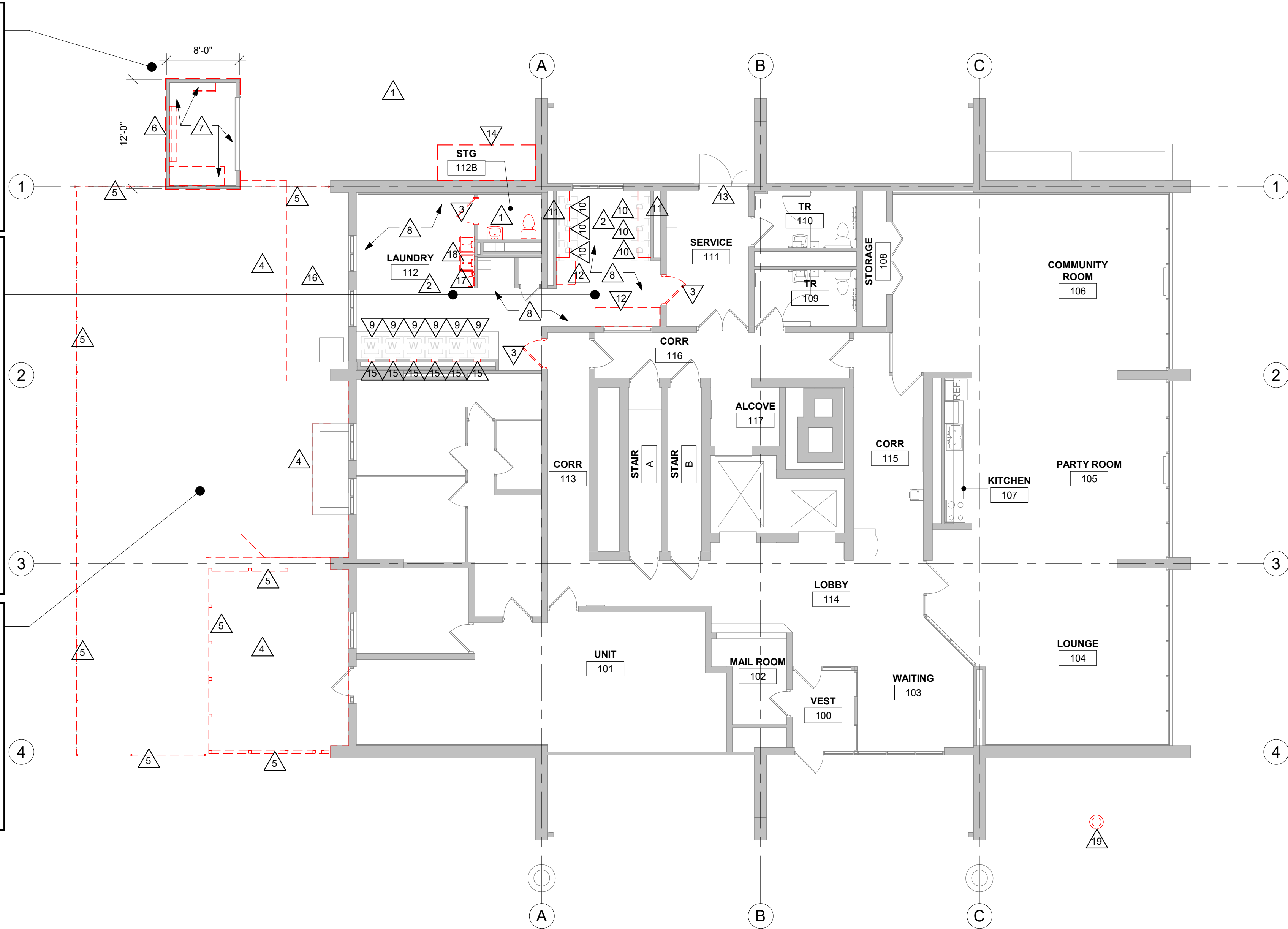
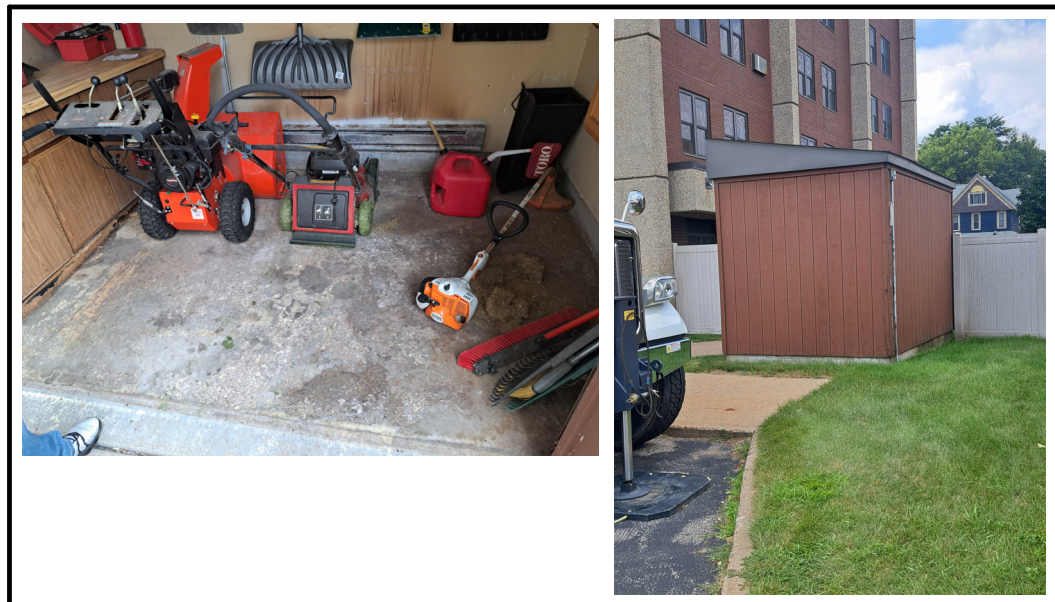
BID
DRAWINGS

Revisions:		
No.	Description	Date
A01	ADDENDUM 1	12/31/2025

Graphic Scale:
VARIES

Last Update:
12/30/2025 6:53:14 AM

G000



DEMOLITION GENERAL NOTES:

- A. ALL ITEMS SHOWN DASHED ON DEMOLITION PLANS SHALL BE REMOVED FROM THE SITE UNLESS OTHERWISE NOTED. REFERENCE CIVIL AND ELECTRICAL DRAWINGS.
- B. SEE CIVIL FOR NEW LAYOUT.

DEMOLITION PLAN LEGEND:

- △ SYMBOL INDICATES CONSTRUCTION NOTE THIS SHEET
- REMOVE ITEMS NOTED WITH DASHED LINES
- ▨ AREA OF CONCRETE SIDEWALK/ BUMPOTS TO BE REMOVED
- ▨ AREA OF ASPHALT PAVING TO BE REMOVED

DEMO KEY NOTES

- REMOVE TOILET ROOM INTERIOR COMPLETELY INCLUDING PLUMBING FIXTURES, LIGHTING AND FLOORING. PATCH WALLS/ FLOORS AS REQUIRED.
- REMOVE EXISTING FLOORING. PREPARE CONCRETE AS REQUIRED FOR NEW FLOORING.
- REMOVE DOOR ONLY.
- REMOVE CONCRETE SIDEWALK/ PATIO- SEE CIVIL.
- REMOVE FENCING, POSTS, AND CONCRETE FOOTINGS- SEE CIVIL.
- REMOVE SIDING AND ROOFING.
- REMOVE CASWORK, TOOL RACKS, LIGHTING AND VENTILATION.
- REMOVE WALL PAPER BORDER AT PERIMETER. CLEAN AND PREP FOR NEW FINISHES.
- OWNER TO REMOVE WASHERS. REINSTALL AFTER INSTALLATION OF NEW FINISHES IS COMPLETE.
- OWNER TO REMOVE DRYERS. REINSTALL AFTER INSTALLATION OF NEW FINISHES IS COMPLETE.
- REMOVE SHELF, BRACKETS AND STANDARDS.
- REMOVE COUNTERTOP AND BRACKETS.
- REMOVE ALUM THRESHOLD AS REQUIRED TO REPAIR CONCRETE.
- REMOVE CANOPY AND FRAMING.
- DISCONNECT AND REMOVE WASHER CONNECTION BOXES. PREP WALL FOR INSTALLATION OF NEW BOXES.
- REMOVE SOD AND GRAVEL.
- REMOVE SOAP AND TOWEL DISPENSER- SEE CIVIL.
- DISCONNECT AND REMOVE UTILITY SINKS.
- REMOVE FLAGPOLE AND FOOTING AS REQUIRED FOR NEW PAVEMENT.

REMODEL GENERAL NOTES:

- A. SEE ID SHEETS FOR FLOOR AND WALL FINISH LAYOUTS.
- B. LOOSE FURNISHINGS EXCEPT AS NOTED SHALL BE PROVIDED AND INSTALLED BY THE OWNER.
- C. AT LIGHTING REPLACEMENT ON EXISTING WALLS, TOUCH UP PAINT AS REQUIRED TO MATCH EXISTING. SEE ELECTRICAL FOR LIGHTING REPLACEMENT EXTENTS.

REMODEL LEGEND:

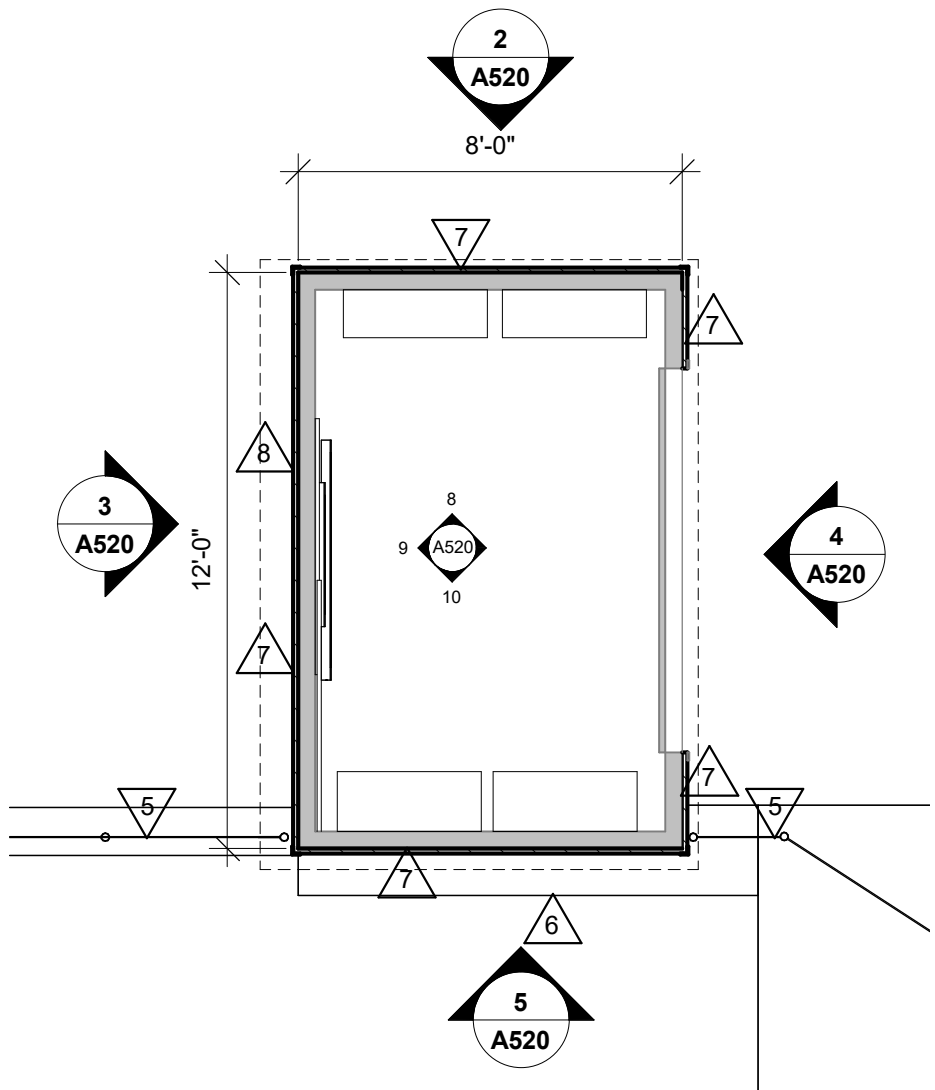
- △ SYMBOL INDICATES CONSTRUCTION NOTE THIS SHEET
- CG CORNER GUARD- SEE ID SHEETS
- FD FLOOR DRAIN

REMODEL KEY NOTES

- INSTALL FRP BEHIND APPLIANCES TO 5'-0" AND INSTALL CORNER GUARDS WHERE NOTED ON PLANS UP TO 5'-0"
- NEW PLAM CASEWORK- SEE SHEET A120.
- NEW 4" CONCRETE SIDEWALK. SLOPE 1/4" PER FT AWAY FROM BUILDING- SEE CIVIL.
- NEW 4" CONCRETE SLAB PATIO ON EXISTING SUB-BASE. SLOPE 1/4" PER FT AWAY FROM BUILDING- SEE CIVIL.
- 6'-0" VINYL FENCE WITH LOCKABLE 4'-0" WIDE GATE. COLOR TO BE DETERMINED- SEE CIVIL.
- 1'-0" WIDE CONCRETE MAINTENANCE STRIP- SEE CIVIL.
- REMOVE LAP SIDING. REPLACE WITH METAL PANEL SIDING. REPLACE WITH METAL ROOF.
- INSTALL WASHING MACHINE OUTLET BOXES- SEE PLBG AND ELECT.
- REMOVE THRESHOLD AS REQUIRED TO REPAIR CONCRETE AT DOOR SILL. REPLACE WHEN COMPLETE.
- NEW SINGLE BOWL UTILITY SINK.
- NEW 12'-0" x 12'-0" PREFABRICATED SHELTER, COORDINATE WITH CIVIL FOR EXACT LOCATION. SEE SPECIFICATION 13.34.19.

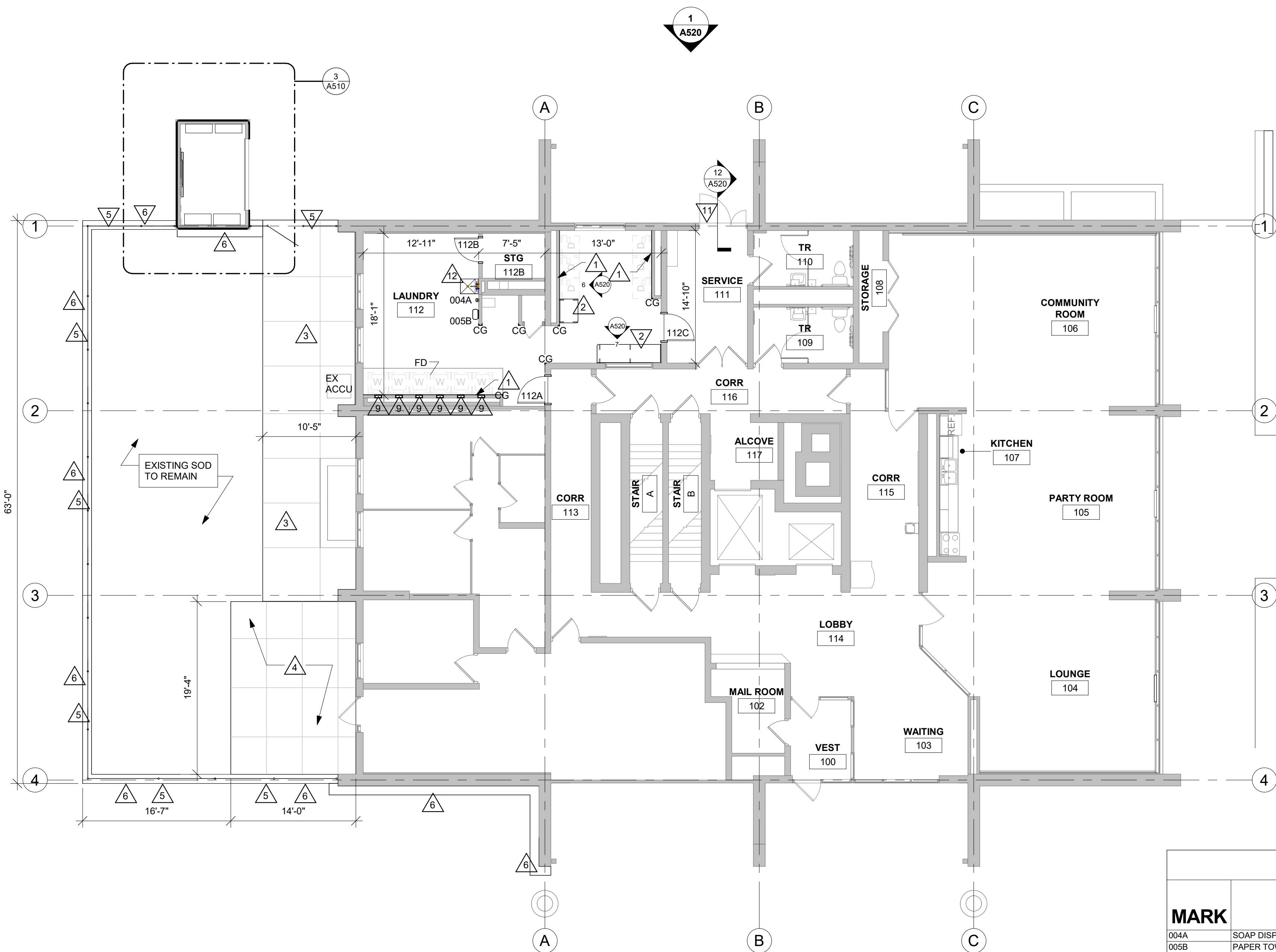
3 ENLARGED SHED PLAN

1/4" = 1'-0"



1 1ST FLOOR DEMOLITION PLAN

1/8" = 1'-0"



ACCESSORY SCHEDULE

MARK	ITEM	HEIGHT A.F.F.	COMMENTS
004A	SOAP DISPENSER MANUAL	X	SEE MOUNTING HEIGHTS DRAWINGS
005B	PAPER TOWEL DISPENSER FOLD	X	SEE MOUNTING HEIGHTS DRAWINGS

2 1ST FLOOR REMODEL PLAN

1/8" = 1'-0"



HSR ASSOCIATES INC.
100 MILWAUKEE STREET
LA CROSSE, WISCONSIN
PHONE: 608.784.1830
FAX: 608.782.5844
www.hsrassociates.com

Consultant:

HOUSING AUTHORITY OF THE CITY OF LA CROSSE
2025 CAPITAL IMPROVEMENT PROJECTS

Project Location: 1307 BADGER STREET
LA CROSSE, WI 54602

DEMO AND REMODEL PLANS

Project Title:
Project Number:
Project Date:
Drawn By:
Key Plan:

25046
DECEMBER 2025
MPL

Key Plan:

BID
DRAWINGS

STOKKE TOWER

No.	Description	Date
A01	ADDENDUM 1	12/31/2025

Graphic Scale:
VARIES

Last Update:
12/30/2025 6:55:45 AM

A510